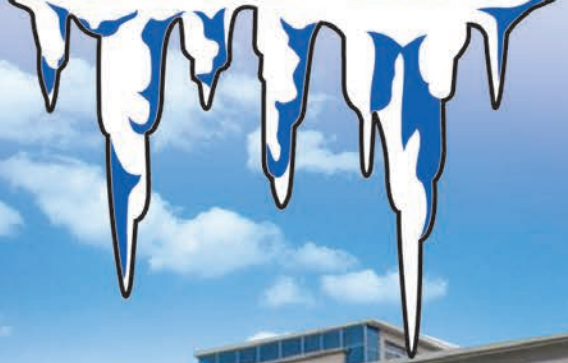


# FROST TECH



*Specialists in display fridges  
for Coffee Shops, Cafés  
& much more*



*Display & Catering Commercial  
Refrigeration Equipment*

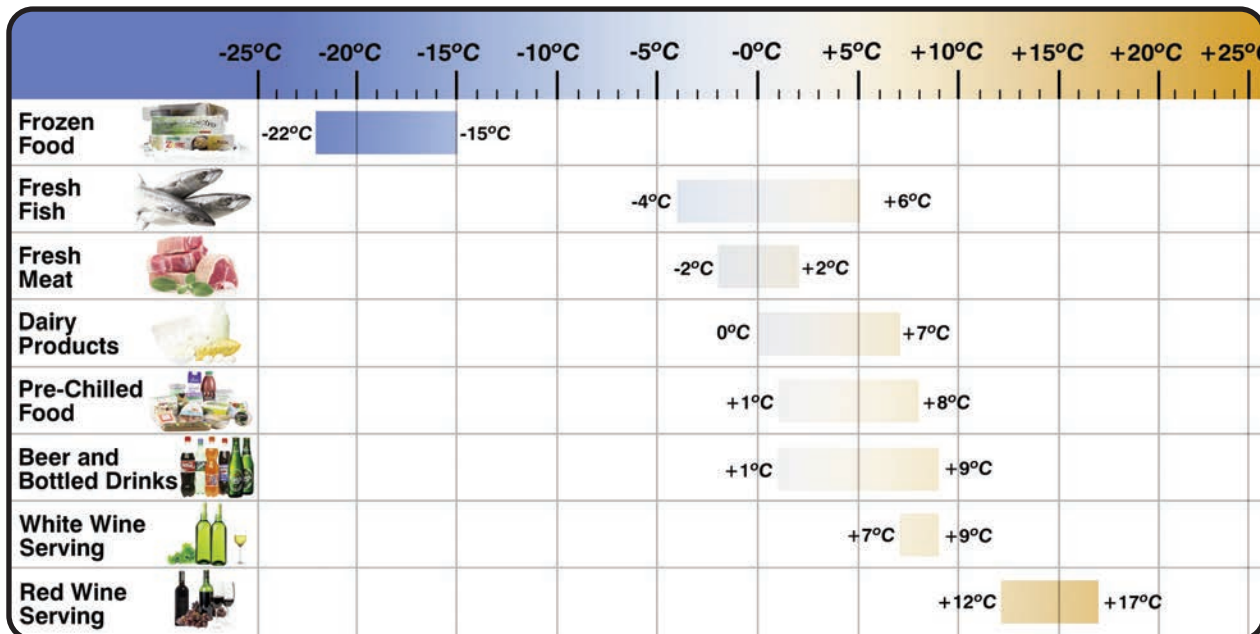
*Tel: 0086 20 34923010  
[www.frost-tech.com](http://www.frost-tech.com)*



# *Index*

<b>Information Page</b>	<b>2</b>
<b>Coffee Shop Advice</b>	<b>3</b>
<b>Multideck Display</b>	<b>4-8</b>
<b>Patisserie/ServeOvers Display</b>	<b>9-17</b>
<b>Grab &amp;Go Display</b>	<b>18-20</b>
<b>Heated Display</b>	<b>20-25</b>
<b>Upright Display</b>	<b>26-31</b>
<b>Chest Freezer Display</b>	<b>32</b>
<b>Gastronorm Storage</b>	<b>33 - 39</b>
<b>Upright Storage</b>	<b>40 - 41</b>
<b>Under Counter Storage</b>	<b>42 - 43</b>
<b>Terms &amp; Conditions Page</b>	<b>44</b>

# Food Temperature Guide



## Overview Climate Classes

Climate Classes	max. Conditions	
Climate Class 3	25°C	60% RH
Climate Class 4	30°C	55% RH
Climate Class 5	40°C	40% RH
Climate Class 6	27°C	70% RH
Climate Class 7	35°C	70% RH
Extended Temperate Class	SN	10°C to 32°C
Temperate Class	N	16°C to 32°C
Sub Tropical Class	ST	18°C to 38°C
Tropical Class	T	18°C to 43°C

## Overview Temperature Classes

Class	The highest temperature of the warmest M-Package equal or lower than °C	The lowest temperature of the coldest M-Package equal or lower than °C	The lowest temperature of the warmest M-Package equal or lower than °C
L1	-15	-	-18
L3	-12	-	-15
M0*	+4	-1	-
M1	+5	-1	-
M2	+7	-1	-
H1	+10	+1	-
H2	+10	-1	-

### Terms and Conditions of Sale

#### Electrical Supply

- All refrigerated cabinets must be PAT tested by the customer (Portable Appliance Test) to the legal requirement. This is to ensure that all electrical connections and components have not been damaged in transit.
- All products should be used in conjunction with an RCD (Residual Current Device).

#### Specifications and Appearance

- Whilst every effort has been made to show up to date pictures and descriptions there may still be errors, we reserve the right to change the specifications, and appearance of any model without notice.

#### Technical Information

- Every effort has been made to ensure the technical information provided in this catalogue is correct. We however reserve the right to change the technical information without notice, and cannot be held responsible for any errors or omissions in this data.

# Some advice for setting up a coffee/cafe shop

Coffee shops can be wonderful little businesses if they are set up correctly. Unfortunately, too many people think it is an easy, cheap option for starting a business and then they are surprised when the business fails. If you are considering starting a coffee shop or café, this article contains some excellent tips to get you started.

The first question you need to ask yourself is simple. Are you any good at making coffee and what will you feed your customers? You need to establish what type of café or coffee shop you are going to open, the type of customers you are hoping to attract, and you need to think about what will make your coffee shop the one passing customers will choose. Most high streets have many coffee houses to choose from, and if you look at them, they will all be slightly different. Think about your passions. Do you love baking delicious pastries? Or do you prefer making dainty tea cakes to enjoy over afternoon tea? Your coffee shop should play to your strengths.

You could also think about a café. It could be a breakfast and lunch stop diner, or it could be an organic café serving healthy snacks and lunches. A café or coffee shop is a place to rest, relax, buy refreshments and eat good food. The types of customers you attract depend entirely upon the type of food and beverages you serve.

Starting a coffee shop involves investment. You will need to purchase the correct cooking, serving, and storage equipment. You could consider a state of the art coffee shop display fridge so customers can easily see the delicious selection of cakes and pastries to choose from. You will need a properly equipped kitchen too, with plenty of surfaces, a fridge, freezer and cooker. Commercial kitchens are very different to domestic kitchens and the appliances are different too.

If you are not sure, spend some time learning about it. You could take a short course at a nearby catering college or you could get to know another café owner and ask their advice. The more information you can gather before you start to purchase equipment the more likely you are to buy the correct items.

Spend some time looking at the other establishments in your town or in nearby towns. Consider what has already been done and try to offer something different, slightly better, and unique. The café business is highly competitive, especially with so many popular coffee chains dominating every corner on every block. What can you do to compete with the big chains?

Specialising in a certain produce is one way to stand out. This may be speciality teas or coffees, or it may be that your coffee shop doubles as a charming antique store, or boutique. There are many bookshops and galleries that also have coffee shops, but if you think about your audience and the types of customers who may pass by your place, you will soon think of ideas that will attract the right clientele.

Develop a business plan which has all the details in it. This will be your guide and help you stay on track with timings and money. It is an involved project and takes time, effort and research. However, once you have made all your carefully detailed plans, you will find it much easier to get started and enjoy the dream of owning your own coffee shop or café.

# Multideck Display Fridges



## Frost Tech Standard Silver Steel Slimline multideck Display Chiller

Our standard silver steel multidecks are perfect for a variety of shops, where food or drink are on the menu. It provides a good blend of top quality manufacturing and durability at a lower price due to the absent of 304 stainless steel, however with four adjustable heavy duty shelves, a top mounted LED light, as well as top of the range components, its still an ideal choice if increasing sales is your goal.



### Features

- Full-length top mounted LED light
- Digital temperature control display
- Full Glass end panels for visibility
- 4 tier adjustable shelving plus base
- Integral night blind, for nighttime saving
- Clear acrylic shelf edge risers
- Auto Electrical or Hot gas defrost
- High-grade silver steel finish
- 4 Adjustable feet
- Low front to maximise display space
- Low energy compressors
- High-performance long-life fan motor
- Slide out condensing system
- Stainless steel drip tray
- Self-evaporating drainage system
- CFC-Free insulation
- 1x 13-amp supplies

**ECO-MD60/180 - Chiller - Silver Painted Steel**

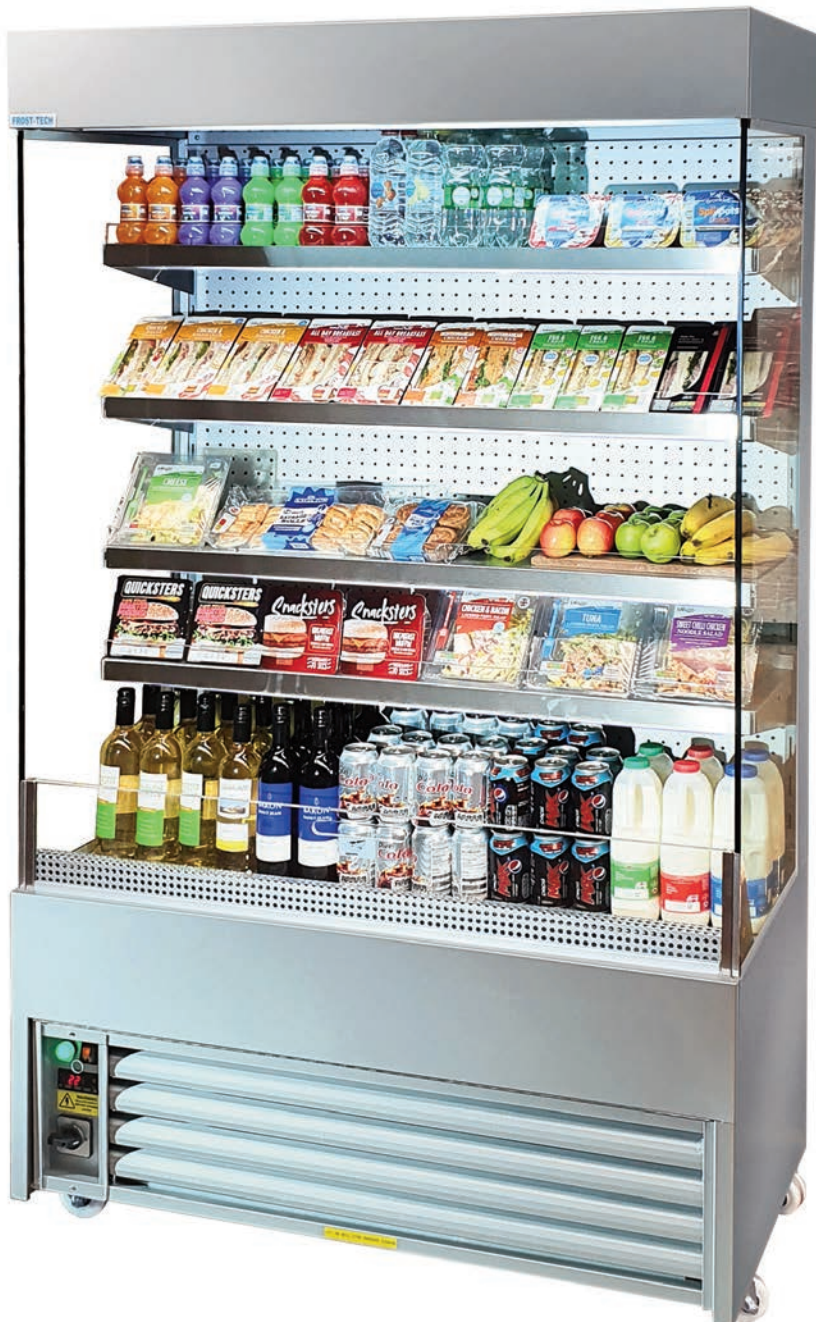
### Technical Specifications

CODE	DIMENSIONS mm WxDxH	TEMP RANGE	SHELVES	WEIGHT KG
ECO-MD60/60	600x600x1950	-1 / +7°C	4	171kg
ECO-MD60/100	1000x600x1950	-1 / +7°C	4	225kg
ECO-MD60/120	1200x600x1950	-1 / +7°C	4	265kg
ECO-MD60/150 (2x 13-amp supplies)	1500x600x1950	-1 / +7°C	4	300kg
ECO-MD60/180 (2x 13-amp supplies)	1800x600x1950	-1 / +7°C	4	364kg

2x 13A plugs which must be inserted into separate 13A sockets connected to a minimum 32A mains supply. The socket employed must be properly earthed, firmly installed and protected by 32-amp circuit breaker type C.

# Frost Tech Premium Stainless Steel Slimline multideck Display

Frost-Tech slimline open fronted display units are stylish, robust and ideal for outlets where space is at a premium, renowned for their reliability and durability with their eye catching looks, four adjustable shelves, full glazed panoramic end walls and top mounted light makes them ideal for high volume retail environments, and the fast-growing grab & go sector. Featuring polished 304 stainless steel finish. (Maximum operating temperature upto 25°C/60%R/H)



## Features

- Full-length top mounted LED light
- Full-length under shelf LED lights
- Digital temperature control display
- Full Glass end panels for visibility
- 4 tier adjustable shelving plus base
- Integral night blind, for nighttime saving
- Clear acrylic shelf edge risers
- Auto Electrical
- High-grade 304 Stainless Steel
- 4 Heavy Duty Castors
- Low front to maximise display space
- Low energy compressors
- High-performance long-life fan motor
- Slide out condensing system
- Stainless steel drip tray
- Self-evaporating drainage system
- CFC-Free insulation
- 1x 13-amp supplies



Cabinets In-Situ (Basket not included)

SD60/120CC - Chiller - Mirrored Stainless Steel

## Technical Specifications

CODE	DIMENSIONS mm WxDxH	TEMP RANGE	SHELVES	WEIGHT KG
SD60/60CC	600x600x2000	-1 / +7°C	4	171kg
SD60/100CC	1000x600x2000	-1 / +7°C	4	225kg
SD60/120CC	1200x600x2000	-1 / +7°C	4	265kg
SD60/150CC (2x 13-amp supplies)	1500x600x2000	-1 / +7°C	4	265kg
SD60/180CC (2x 13-amp supplies)	1800x600x2000	-1 / +7°C	4	265kg

2x 13A plugs which must be inserted into separate 13A sockets connected to a minimum 32A mains supply. The socket employed must be properly earthed, firmly installed and protected by 32-amp circuit breaker type C.

# Frost Tech Heavy Duty Lockable Stainless Steel Shutter Multideck

Open fronted stainless steel multideck display with heavy duty lockable shutter and four adjustable shelves, ideal for high volume retail environments. (Maximum operating temperature upto 25°C/60%R/H)



## Features

- Full-length top-mounted lights
- Digital temperature control display
- Double Glazed Glass Sides
- 4 tier adjustable shelving plus base
- Integral lockable shutter, for nighttime saving
- Clear acrylic shelf edge risers
- 304 Stainless Steel high-grade finish
- Auto Electrical defrost
- 4 Fitted Castors
- Low front to maximise display space
- CFC-Free insulation
- Low energy compressors
- High-performance long-life fan motor
- Slide out condensing system
- Stainless steel drip tray
- Self-evaporating drainage system
- 2x 13-amp supplies (SD75/190)

**SD75/180SH - Chiller - Mirrored Stainless Steel**



## Technical Specifications

CODE	DIMENSIONS mm WxDxH	TEMP RANGE	SHELVES	WEIGHT KG
SD75/100SH	1000x750x2000	-1 / +7°C	4	251kg
SD75/120SH	1200x750x2000	-1 / +7°C	4	291kg
SD75/180SH (2x 13-amp supplies)	1900x750x2000	-1 / +7°C	4	410kg

2x 13A plugs which must be inserted into separate 13A sockets connected to a minimum 32A mains supply. The socket employed must be properly earthed, firmly installed and protected by 32-amp circuit breaker type C.

# Frost Tech Black - Full Glass Slimline Multideck

Open fronted display chillers, ideal for merchandising snack foods, drinks and dairy products with a stylish black look. (Maximum operating temperature upto 25°C/60%R/H)



### Features

- Full length top mounted light
- Digital temperature control display
- Full Glass end panels for visibility
- 4 tier adjustable shelving plus base
- Integral night blind, for nighttime saving
- Clear acrylic shelf edge risers
- Auto Electrical or Hot gas defrost
- 4 Adjustable feet
- Low front to maximise display space
- Low energy compressors
- High performance long life fan motor
- Slide out condensing system,
- Stainless steel drip tray
- Self evaporating drainage system
- CFC-Free insulation

**BD60/120 Chiller Black Steel**

### Technical Specifications

CODE	DIMENSIONS mm WxDxH	TEMP RANGE	SHELVES	CONTAINER 40FT	WEIGHT KG
BD60/60	600x600x1950	-1 / +7°C	4	57	163kg
BD60/100	1000x600x1950	-1 / +7°C	4	38	209kg
BD60/120	1200x600x1950	-1 / +7°C	4	28	255kg
BD60/150 (2x 13-amp supplies)	1500x600x1950	-1 / +7°C	4	26	282kg
BD60/180 (2x 13-amp supplies)	1800x600x1950	-1 / +7°C	4	19	350kg

2x 13A plugs which must be inserted into separate 13A sockets connected to a minimum 32A mains supply. The socket employed must be properly earthed, firmly installed and protected by 32-amp circuit breaker type C.



# Dual Temperature Hot and Cold Premium Mirrored Stainless Steel Multideck

This Premium Hot & Cold Multideck comes in an elegant mirrored stainless steel finish, with a great system of LED light to illuminate contents and presents the stock of heated pastries and chilled drink sandwiches as an example.

Our slimline open fronted hot and cold dual multidecks are stylish, robust and ideal for outlets where space is at a premium. Renowned for their reliability and durability with their eye catching looks, 3 adjustable glass shelves and 2 fixed heated shelves, full glazed panoramic end walls, side mounted LED lighting makes them ideal for high volume retail environments, and the fast-growing grab & go sector.



## Features

- Temp Range fridge -1 / +7 °C
- Temp Range heater +65 / +75 °C
- Full-length top-mounted LED light
- Under shelf LED lights
- Fitted castors 2
- Digital temperature control display
- Full glass end panels for visibility
- 3 tier adjustable shelves chilled
- 2 tier fixed shelves heated
- Integral night blind, for nighttime saving
- Auto defrost
- 304 Stainless Steel high-grade finish
- Low front to maximise display space
- Low energy compressors
- High-performance long-life fan motor
- Slide out condensing system
- Stainless steel drip tray
- Self-evaporating drainage system

**DTM60 Chiller/Heater Mirrored Stainless Steel**

## Technical Specifications

CODE	DIMENSIONS mm WxDxH	TEMP RANGE FRIDGE	TEMP RANGE HEATER	SHELVES	WEIGHT KG
DTM60	600x600x2000	-1 / +7°C	+65 / +75°C	4	163kg

2x 13A plugs which must be inserted into separate 13A sockets connected to a minimum 32A mains supply. The socket employed must be properly earthed, firmly installed and protected by 32-amp circuit breaker type C.

# Patisserie/Serve Over Display Fridges



The right display cabinet is a careful consideration for anyone who wishes to offer patisserie type products.

## Standard Silver Steel Patisserie Slimline Display Fridges

These great units are stylish, robust, slimline and renowned for their reliability with their eye-catching looks, 3 adjustable glass shelves, panoramic double glazed display glass, top mounted LED light and sliding rear doors makes them ideal for high volume retail environments. So, this display fridge will give a nice attractive feel to any store.



**ECO-P60/150 Chiller Silver Painted Steel**

### Features

- Full length top mounted light
- Digital temperature control display
- Full Glass end panels for visibility
- 4 tier adjustable shelving plus base
- Integral night blind, for nighttime saving
- Clear acrylic shelf edge risers
- Auto Electrical or Hot gas defrost
- 4 Adjustable feet
- Low front to maximise display space
- Low energy compressors
- High performance long life fan motor
- Slide out condensing system,
- Stainless steel drip tray
- Self evaporating drainage system
- CFC-Free insulation

### Technical Specifications

CODE	DIMENSIONS mm WxDxH	TEMP RANGE	SHELVES	WEIGHT KG
ECO-P60/90	900x600x1200	+3 / +7°C	3	190kg
ECO-P60/120	1200x600x1200	+3 / +7°C	3	210kg
ECO-P60/150	1500x600x1200	+3 / +7°C	3	244kg

13A plugs which must be inserted into separate 13A sockets connected to a minimum 32A mains supply. The socket employed must be properly earthed, firmly installed and protected by 32-amp circuit breaker type C.

## Standard Black Steel Patisserie Slimline Display Fridges

The black steel flat glass patisserie fridge is a high quality Frost-Tech cabinet, these great units are stylish, robust, slimline and renowned for their reliability and durability with their eye-catching looks, 3 adjustable glass shelves, panoramic double glazed display glass, top mounted LED light and sliding rear doors makes them ideal for high volume retail environments. So, this display fridge will give a nice attractive feel to any store.



**ECO-P60/120B Chiller Black Steel**

### Features

- Full length top mounted light
- Digital temperature control display
- Full Glass end panels for visibility
- 4 tier adjustable shelving plus base
- Integral night blind, for nighttime saving
- Clear acrylic shelf edge risers
- Auto Electrical or Hot gas defrost
- 4 Adjustable feet
- Low front to maximise display space
- Low energy compressors
- High performance long life fan motor
- Slide out condensing system,
- Stainless steel drip tray
- Self evaporating drainage system
- CFC-Free insulation

### Technical Specifications

CODE	DIMENSIONS mm WxDxH	TEMP RANGE	SHELVES	WEIGHT KG
ECO-P60/90B	900x600x1200	+3 / +7°C	3	190kg
ECO-P60/120B	1200x600x1200	+3 / +7°C	3	210kg
ECO-P60/150B	1500x600x1200	+3 / +7°C	3	244kg

13A plugs which must be inserted into separate 13A sockets connected to a minimum 32A mains supply. The socket employed must be properly earthed, firmly installed and protected by 32-amp circuit breaker type C.

## Patisserie Display Fridge - Silver Steel Flat Glass

These great units are stylish, robust and renowned for their reliability and durability with their eye-catching looks, 3 adjustable glass shelves, panoramic display glass, top mounted LED light and sliding rear doors makes them ideal for high volume retail environments.



### Features

- Temp Range +3 / +12 °C
- Full-length top-mounted LED light
- Digital temperature control display
- Flat front & side glass for great visibility
- 3 tier adjustable glass shelving plus base
- Silver coloured steel finish
- Auto Electrical defrost
- 4 Adjustable feet
- Low front to maximise display space
- Low energy compressors
- High-performance long life fan motor
- Slide out condensing system
- Stainless steel drip tray
- Self-evaporating drainage system
- CFC-Free insulation

**ECO-P75/90CC Chiller Silver Painted Steel**

### Technical Specifications

CODE	DIMENSIONS mm WxDxH	TEMP RANGE	SHELVES	WEIGHT KG
ECO-P75/60CC	600x750x1450	+3 / +7°C	3	165kg
ECO-P75/90CC	900x750x1450	+3 / +7°C	3	195kg
ECO-P75/120CC	1200x750x1450	+3 / +7°C	3	235kg

13A plugs which must be inserted into separate 13A sockets connected to a minimum 32A mains supply. The socket employed must be properly earthed, firmly installed and protected by 32-amp circuit breaker type C.

## Stainless Mirrored Steel Closed Patisserie (Costa-Coffee) with Castors

This stylish Stainless Steel Closed Patisserie (Costa-Coffee) with Castors included is one of our best-selling commercial fridge cabinets ideal for chilling cakes or other patisserie products. When merchandising food/cakes the standard patisserie cabinets can't always fit the need, this Closed Patisserie is where our up-market high quality delicatessen style cabinets are perfect.



**SP75/120CC Chiller Mirrored Stainless Steel**

### Features

- Temp Range +3 / +12 °C
- Full-length top mounted light
- Digital temperature control display
- Full flat glass for visibility
- 3 tier adjustable glass shelving
- Under shelf lights
- 304 Stainless Steel high-grade finish
- Auto Electrical defrost
- 4 Heavy Duty Castors
- Low front to maximise display space
- Low energy compressors
- High-performance long-life fan motor
- Slide out condensing system
- Stainless steel drip tray
- Self evaporating drainage system
- CFC-Free insulation

### Technical Specifications

CODE	DIMENSIONS mm WxDxH	TEMP RANGE	SHELVES	WEIGHT KG
SP75/60CC	600x800x1500	+3 / +7°C	3	165kg
SP75/90CC	900x800x1500	+3 / +7°C	3	207kg
SP75/120CC	1200x800x1500	+3 / +7°C	3	250kg

13A plugs which must be inserted into separate 13A sockets connected to a minimum 32A mains supply. The socket employed must be properly earthed, firmly installed and protected by 32-amp circuit breaker type C.

## Stainless Steel Double Glazed Patisserie Display Fridge

Our stylish Stainless Steel Double Glazed Patisserie Display Fridge cabinets will completely remove any chance of condensation as well as help save your energy consumption. They are ideal for chilling cakes, croissants, pastries, and much more, will give a nice attractive feel to any store.



### Features

- Top mounted Energy Saving LED light
- Digital temperature control display
- Double glazed curved front glass
- LED under shelf lights
- 3 adjustable glass shelves
- 304 Stainless Steel high-grade finish
- Auto Electrical defrost
- 4 Adjustable feet
- Low front to maximise display space
- Low energy compressors
- High-performance long-life fan motor
- Slide out condensing system
- Stainless steel drip tray
- Self-evaporating drainage system
- CFC-Free insulation

**SCNP75/100DG Chiller Mirrored Stainless Steel**

### Technical Specifications

CODE	DIMENSIONS mm WxDxH	TEMP RANGE	SHELVES	WEIGHT KG
SCNP75/100DG	1000x750x1450	-1 / +7°C	3	237kg
SCNP75/120DG	1200x750x1450	-1 / +7°C	3	269kg
SCNP75/150DG	1500x750x1450	-1 / +7°C	3	310kg

13A plugs which must be inserted into separate 13A sockets connected to a minimum 32A mains supply. The socket employed must be properly earthed, firmly installed and protected by 32-amp circuit breaker type C.

# Stainless Mirrored Steel Upright Cake Display Fridge

Choose our upright Cake Display Fridge, a stylish stainless steel 4 glass side model, ideal for chilling cakes, croissants, pastries and much more. So, this display fridge will give a nice attractive feel to any store.



## Features

- Full-length side-mounted
- LED lights
- Digital temperature control display
- 4 side glass for great visibility
- 4 tier adjustable shelving
- High Grade Stainless Steel finish
- Auto Electrical defrost
- 4 Castors
- Low energy compressors
- High-performance long life fan motor
- Slide out condensing system
- Stainless steel drip tray
- Self-evaporating drainage system
- CFC-Free insulation

**GDT70C Chiller Mirrored Stainless Steel**

## Technical Specifications

CODE	DIMENSIONS mm WxDxH	TEMP RANGE	SHELVES	WEIGHT KG
GDT70C	700x800x1900	-1 / +7°C	4	150kg

13A plugs which must be inserted into separate 13A sockets connected to a minimum 32A mains supply. The socket employed must be properly earthed, firmly installed and protected by 32-amp circuit breaker type C.

## Slimline Silver Steel Serve Over Display

Our slimline Serve Over Display Chiller with flat glass silver coloured steel fan-assisted is the ideal combination of high-quality construction and durability, featuring a top-mounted light, rear work surface, two ambient shelves and chilled under counter storage with an adequate display area. It is ideal for most retail environment offering display impact. This cabinet is suitable for fresh meat. So, this display fridge will give a nice attractive feel to any store.



**ECO-SO75/200 Chiller Silver Painted Steel**

### Features

- Full-length top-mounted light
- Chilled Under counter storage
- Digital temperature control display
- Full flat front glass for visibility
- Silver coloured steel finish
- 2 Ambient shelves
- 4 Adjustable feet
- Low front to maximise display space
- Low energy compressors
- High-performance long life fan motor
- Slide out condensing system
- Stainless steel drip tray
- Self-evaporating drainage system
- CFC-Free insulation

### Technical Specifications

CODE	DIMENSIONS mm WxDxH	TEMP RANGE	SHELVES	WEIGHT KG
ECO-SO75/100	1000x790x1480	0 / +12°C	2 Ambient	158kg
ECO-SO75/120	1200x790x1480	0 / +12°C	2 Ambient	180kg
ECO-SO75/150	1500x790x1480	0 / +12°C	2 Ambient	206kg
ECO-SO75/200	2000x790x1480	0 / +12°C	2 Ambient	256kg

13A plugs which must be inserted into separate 13A sockets connected to a minimum 32A mains supply. The socket employed must be properly earthed, firmly installed and protected by 32-amp circuit breaker type C.



## Standard Silver Steel Double Glazed Counter Patisserie

The Frost-Tech Standard Silver Steel Double Glazed Counter is a stylish high-quality flat glass display counter, ideal for patisserie, coffee and cake shops in need of a stylish chilled display which can be built with your new or existing counter.



**ECO-SGC150 Chiller Silver Painted Steel**

### Features

- Top Mounted LED lights
- Under Counter Refrigerated Storage
- Digital temperature control display
- Full double glazed for visibility
- Silver coloured Steel finish
- Auto Electrical defrost
- 4 heavy duty feet
- ECO low energy compressor
- Long-life top-of-the-range fan motor
- Glide out condensing structure
- Stainless steel drip tray
- Drainage system auto evaporating
- Insulation CFC-Free

### Technical Specifications

CODE	DIMENSIONS mm WxDxH	TEMP RANGE	SHELVES	WEIGHT KG
ECO-SGC100	1000x790x1540	0 / +5°C	1	230kg
ECO-SGC120	1200x790x1540	0 / +5°C	1	250kg
ECO-SGC150	1500x790x1540	0 / +5°C	1	300kg

13A plugs which must be inserted into separate 13A sockets connected to a minimum 32A mains supply. The socket employed must be properly earthed, firmly installed and protected by 32-amp circuit breaker type C.

## Stainless Steel Double Glazed Counter Top Display

The top-of-the-range Frost-Tech Stainless Steel Double Glazed Counter Top Chillers are ideal for restaurants, cake or coffee shops in need of a stylish chilled display which can be on top of your new or existing counter.



**STC150 Chiller Mirrored Stainless Steel**

### Features

- Mounted LED lights
- Digital temperature control display
- Full double glazed for visibility
- 304 Stainless Steel high-grade finish
- Auto Electrical defrost
- 4 heavy duty feet
- ECO low energy compressor
- Long-life top-of-the-range fan motor
- Glide out condensing structure
- Stainless steel drip tray
- Drainage system auto evaporating
- Insulation CFC-Free

### Technical Specifications

CODE	DIMENSIONS mm WxDxH	TEMP RANGE	WEIGHT KG
STC100	1000x750x720	0 / +5°C	90kg
STC120	1200x750x720	0 / +5°C	100kg
STC150	1500x790x720	0 / +5°C	120kg

13A plugs which must be inserted into separate 13A sockets connected to a minimum 32A mains supply. The socket employed must be properly earthed, firmly installed and protected by 32-amp circuit breaker type C.

# Open Fronted Grab & Go Display Fridges



The right display cabinet is a careful consideration for anyone who wishes to offer grab & go type products.

## Open grab & Go Display Fridge - Silver Steel Flat Glass

These great units are stylish, robust and renowned for their reliability and durability with their eye-catching looks, 3 adjustable glass shelves, panoramic display glass, top mounted LED light and large open front makes them ideal for high volume retail environments.



### Features

- Temp Range +3 / +12 °C
- Full-length top-mounted LED light
- Digital temperature control display
- Flat glass for great visibility
- 3 tier adjustable glass shelving plus base
- Silver coloured steel finish
- Auto Electrical defrost
- 4 Adjustable feet
- Low front to maximise display space
- Low energy compressors
- High-performance long life fan motor
- Slide out condensing system
- Stainless steel drip tray
- Self-evaporating drainage system
- CFC-Free insulation

**ECO-LD75/120CC Chiller Silver Painted Steel**

### Technical Specifications

CODE	DIMENSIONS mm WxDxH	TEMP RANGE	SHELVES	WEIGHT KG
ECO-LD75/60CC	600x750x1450	+3 / +7°C	3	160kg
ECO-LD75/90CC	900x750x1450	+3 / +7°C	3	190kg
ECO-LD75/120CC	1200x750x1450	+3 / +7°C	3	230kg

13A plugs which must be inserted into separate 13A sockets connected to a minimum 32A mains supply. The socket employed must be properly earthed, firmly installed and protected by 32-amp circuit breaker type C.

# Stainless Mirrored Steel Grab & Go Display (Costa Coffee) with Castors

The Frost-Tech Stainless Steel Grab & Go Display (Costa Coffee) with Castors included is ideal for high volume retail environments, and the fast-growing Grab & Go sector. When merchandising food/drinks the standard commercial fridge cabinets can't always fit the need, this is where our up-market high quality delicatessen style cabinets are perfect, with its large open front grab and go display.



### Features

- Full-length top mounted light
- Flat glass top and sides
- Digital temperature control display
- 3 tier adjustable glass shelving
- Under shelf lighting
- 304 Stainless Steel high-grade finish
- Auto Electrical defrost
- 4 Heavy Duty Castors
- Low front to maximise display space
- Low energy compressors
- High-performance long-life fan motor
- Slide out condensing system
- Stainless steel drip tray
- Self evaporating drainage system
- CFC-Free insulation



**SLD75/120CC    Open Chiller    Mirrored Stainless Steel**

### Technical Specifications

CODE	DIMENSIONS mm WxDxH	TEMP RANGE	SHELVES	WEIGHT KG
SLD75/60CC	600x800x1500	-1 / +7°C	3	165kg
SLD75/90CC	900x800x1500	-1 / +7°C	3	207kg
SLD75/120CC	1200x800x1500	-1 / +7°C	3	250kg
SLD75/150CC	1500x800x1500	-1 / +7°C	3	309kg

13A plugs which must be inserted into separate 13A sockets connected to a minimum 32A mains supply. The socket employed must be properly earthed, firmly installed and protected by 32-amp circuit breaker type C.

# Stainless Steel Open Double Glazed Flat Glass Display Fridge

Our stylish Frost-Tech Stainless Steel Open Double Glazed Flat Glass Cabinet is one of our best-selling display fridge multidecks and it's ideal for Grab & Go or Patisserie environments. Its open-fronted commercial fridge is perfect for selling sandwiches, paninis, drinks and much more and they will give a nice attractive feel to any store. Providing the perfect combination of high-quality construction and durability, featuring a top-mounted light and three adjustable glass shelves. Sliding rear loading doors gives easy access for staff to restock.



**SOP75/100SQ Chilled Mirrored Stainless Steel**

## Features

- 1x Full-length top-mounted light
- 3 Tier adjustable glass shelving plus base
- 3x Full-length under shelf lighting
- Digital temperature control display
- 304 Stainless Steel high-grade finish
- Auto Electrical Defrost
- 4 Adjustable feet
- Low front to maximise display space
- Low energy compressors
- High-performance long-life fan motor S
- Slide out condensing system
- Stainless steel drip tray
- Self-evaporating drainage system
- CFC-Free insulation

## Technical Specifications

CODE	DIMENSIONS mm WxDxH	TEMP RANGE	SHELVES	WEIGHT KG
SOP75/100SQ	1000x750x1350	-1/ +7°C	3	205kg

13A plugs which must be inserted into separate 13A sockets connected to a minimum 32A mains supply. The socket employed must be properly earthed, firmly installed and protected by 32-amp circuit breaker type C.

# Heated Display Cabinets



Heated Display Premium Cabinets are essential for keeping food hot whilst on display in your bakery, cafe, restaurant or cafeteria.

## Stainless Mirrored Steel Hot Pastry Display Cabinet

The stylish Frost-Tech Stainless Steel Hot Pastry Display cabinet is ideal for heating any type of pastries, with the flat double glazed glass. This will give a nice attractive feel to any store. With the perfect combination of high-quality construction and durability, featuring two side lights and two adjustable shelves with flat double glazed front top and sides for maximum visibility. Sliding rear loading doors gives easy access for staff to restock and serve.

### Features

- Full-length side-mounted lights
- Double glazed flat front glass for visibility and Energy saving
- 2 adjustable shelves plus base
- 304 Stainless Steel high-grade finish
- 4 Adjustable feet
- Low front to maximise display space
- CFC-Free insulation



**SHP75/90DG Chiller Mirrored Stainless Steel**

### Technical Specifications

CODE	DIMENSIONS mm WxDxH	TEMP RANGE	SHELVES	WEIGHT KG
SHP75/90DG	900x750x1350	+65 / +90°C	2	190kg

13A plugs which must be inserted into separate 13A sockets connected to a minimum 32A mains supply. The socket employed must be properly earthed, firmly installed and protected by 32-amp circuit breaker type C.

# Stainless Mirrored Steel Heated Grab & Go Open Pastry Display

The stylish Frost-Tech Stainless Steel heated grab and go Pastry Display cabinet is ideal for heating all types of hot food, with the flat double glazed glass. This will give a nice attractive feel to any store. With the perfect combination of high-quality construction and durability, featuring two side lights and two fixed shelves with flat double glazed top and sides for maximum visibility.



## Features

- Temp range +65 / +90 °C
- Full-length side-mounted lights
- Double glazed glass for visibility and Energy saving
- 2 fixed shelves plus base
- 304 Stainless Steel high-grade finish
- 4 Adjustable feet
- Low front to maximise display space
- CFC-Free insulation

**SHP75/90DG Chiller Mirrored Stainless Steel**

## Technical Specifications

CODE	DIMENSIONS mm WxDxH	TEMP RANGE	SHELVES	WEIGHT KG
HLM75/100DG	900x750x1350	+65 / +90°C	2	180kg

13A plugs which must be inserted into separate 13A sockets connected to a minimum 32A mains supply. The socket employed must be properly earthed, firmly installed and protected by 32-amp circuit breaker type C.

# Silver Steel Heated Double Glazed Display Counter

Coated steel double glazed counter display Heater 1000mm wide, is stylish, strong and renowned for their dependability and durability with side LED lights. Sliding rear loading doors gives easy access for staff to restock.



## Features

- Mounted LED lights
- Digital temperature control display
- Full double glazed for visibility
- 4 heavy duty feet Insulation
- CFC-Free

**SHG100 Chilled Silver Painted Steel**

## Technical Specifications

CODE	DIMENSIONS mm WxDxH	TEMP RANGE	SHELVES	WEIGHT KG
SHG100	1000x730x1550	+65/ +90°C	1	170kg

13A plugs which must be inserted into separate 13A sockets connected to a minimum 32A mains supply. The socket employed must be properly earthed, firmly installed and protected by 32-amp circuit breaker type C.



# Stainless Mirrored Steel Heated Grab & Go Open Pastry Display

The Frost-Tech Stainless Steel Hot Multideck Display cabinets are ideal for heating hot rolls, pies, pasties, sandwiches and filled rolls, with the full glass side and smart, stylish look they will give a nice attractive feel to any store. HSM60/60

This Hot Multideck Display is the perfect combination of high-quality construction and durability, featuring 2 top mounted lights and 4 fixed hot plate shelves with top of the range components.

## Features

- Top mounted light
- Full length side lights
- Digital temperature control display
- Double glazed glass end panels for visibility and Energy saving
- 4 tier fixed hot plate shelving (shelf surface temp range +65 / +75 °C)
- 304 Stainless Steel high-grade finish
- 4 Adjustable feet
- Low front to maximise display space
- 13-amp plug supply



**SHP75/90DG Chiller Mirrored Stainless Steel**

## Technical Specifications

CODE	DIMENSIONS mm WxDxH	TEMP RANGE	SHELVES	WEIGHT KG
HSM60/60	600x600x1950	+65 / +75°C	4 Fixed	180kg

13A plugs which must be inserted into separate 13A sockets connected to a minimum 32A mains supply. The socket employed must be properly earthed, firmly installed and protected by 32-amp circuit breaker type C.

# Dual Temperature Hot and Cold Premium Mirrored Stainless Steel Multideck

This Premium Hot & Cold Multideck comes in an elegant mirrored stainless steel finish, with a great system of LED light to illuminate contents and presents the stock of heated pastries and chilled drink sandwiches as an example. Our slimline open fronted hot and cold dual multidecks are stylish, robust and ideal for outlets where space is at a premium. Renowned for their reliability and durability with their eye catching looks, 3 adjustable glass shelves and 2 fixed heated shelves, full glazed panoramic end walls, side mounted LED lighting makes them ideal for high volume retail environments, and the fast-growing grab & go sector.



## Features

- Temp Range fridge -1 / +7 °C
- Temp Range heater +65 / +75 °C
- Full-length top-mounted LED light
- Under shelf LED lights
- Fitted castors 2
- Digital temperature control display
- Full glass end panels for visibility
- 3 tier adjustable shelves chilled
- 2 tier fixed shelves heated
- Integral night blind, for nighttime saving
- Auto defrost
- 304 Stainless Steel high-grade finish
- Low front to maximise display space
- Low energy compressors
- High-performance long-life fan motor
- Slide out condensing system
- Stainless steel drip tray
- Self-evaporating drainage system

**DTM60 Chiller/Heater Mirrored Stainless Steel**

## Technical Specifications

CODE	DIMENSIONS mm WxDxH	TEMP RANGE FRIDGE	TEMP RANGE HEATER	SHELVES	WEIGHT KG
DTM60	600x600x2000	-1 / +7°C	+65 / +75°C	4	163kg

13A plugs which must be inserted into separate 13A sockets connected to a minimum 32A mains supply. The socket employed must be properly earthed, firmly installed and protected by 32-amp circuit breaker type C.

# Upright Chiller & Freezer

## Display Cabinets



Frost Tech display chillers & freezers are the choice of many large organisations who depend on effective display of product.

### Frost Tech Standard White Upright Glass Door Chiller

Our Standard White Upright Glass Door Chiller is a great value standard display chiller with an easy clean interior, with LED lighting and digital controller providing the perfect environment to display your chilled items. This commercial fridge is ideal for outlets where full height storage is a necessity.



#### Features

- White steel exterior.
- Aluminium interior for long life
- 4 Adjustable heavy duty shelves
- Fitted castors
- 4 Adjustable feet for leveling
- Digital temperature control display
- Manual defrost
- CFC-Free insulation
- High-performance long life fan motor
- Low energy compressors
- Replaceable door gasket, for maintenance
- Suitable for use in high ambient
- Stainless Steel drip tray, no rust

**ECO-UGC60 Chiller White Steel**

#### Technical Specifications

CODE	DIMENSIONS mm WxDxH	TEMP RANGE	SHELVES	WEIGHT KG
ECO-UGC60	600x680x1960	+2 / +7°C	4	103kg

13A plugs which must be inserted into separate 13A sockets connected to a minimum 32A mains supply. The socket employed must be properly earthed, firmly installed and protected by 32-amp circuit breaker type C.

## Standard White Upright Double Door Hinged Display Chiller

Our White small Double Glass Door Upright Display Chiller is a great value standard double door display chiller and has an easy clean interior, with LED lighting and digital controller. Our Upright display chiller is providing the perfect environment to display your chilled items.



### Features

- White steel exterior.
- Aluminium interior for long life
- 5 Adjustable heavy duty shelves
- Fitted castors
- 4 Adjustable feet for leveling
- Digital temperature control display
- Manual defrost
- CFC-Free insulation
- High-performance long life fan motor
- Low energy compressors
- Replaceable door gasket, for maintenance
- Suitable for use in high ambient
- Stainless Steel drip tray, no rust

### Technical Specifications

CODE	DIMENSIONS mm WxDxH	TEMP RANGE	SHELVES	WEIGHT KG
ECO-UGC88	880x680x1960	+2 / +7°C	5	155kg

13A plugs which must be inserted into separate 13A sockets connected to a minimum 32A mains supply. The socket employed must be properly earthed, firmly installed and protected by 32-amp circuit breaker type C.

# Standard White Upright Double Door Hinged Display Chiller

Our White large Double Glass Door Upright Display Chiller is a great value standard double door display chiller and has an easy clean interior, with LED lighting and digital controller. Our Upright display chiller is providing the perfect environment to display your chilled items.



**ECO-UHGC120 Chiller White Steel**

## Features

- White steel exterior.
- Aluminium interior for long life
- 5 Adjustable heavy duty shelves
- Fitted castors
- 4 Adjustable feet for leveling
- Digital temperature control display
- Manual defrost
- CFC-Free insulation
- High-performance long life fan motor
- Low energy compressors
- Replaceable door gasket, for maintenance
- Suitable for use in high ambient
- Stainless Steel drip tray, no rust

## Technical Specifications

CODE	DIMENSIONS mm WxDxH	TEMP RANGE	SHELVES	WEIGHT KG
ECO-UHGC120	880x680x1970	+2 / +7°C	5	190kg

13A plugs which must be inserted into separate 13A sockets connected to a minimum 32A mains supply. The socket employed must be properly earthed, firmly installed and protected by 32-amp circuit breaker type C.

# Frost Tech Premium Upright Double Sliding Door Display Freezer

The Upright Display Chiller – Premium Double Sliding Door is an amazing high capacity upright bottle coolers with LED integrated side lights, 5 adjustable shelves and digital controller are a great way to improve your store, our glass sliding door fridge can be used to display soft and alcoholic drinks, dairy produce, packed snacks, sandwiches and much more.



**USGC120 Chiller White Steel**

### Features

- White steel exterior.
- Aluminium interior for long life
- Vertical energy saving LED strip lights
- 5 Adjustable heavy duty shelves
- Self-closing double glazed door
- 4 Castors for ease of cleaning
- 2 Front feet for leveling
- Digital temperature control display
- Auto electrical defrost
- CFC-Free insulation
- High-performance long-life fan motor
- Low energy compressors
- Replaceable door gasket, ease of maintenance
- Suitable for use in high ambient
- Stainless Steel drip tray, no rust

### Technical Specifications

CODE	DIMENSIONS mm WxDxH	TEMP RANGE	SHELVES	WEIGHT KG
USGC120	1200x660x1960	+2 / +7°C	5	196kg

13A plugs which must be inserted into separate 13A sockets connected to a minimum 32A mains supply. The socket employed must be properly earthed, firmly installed and protected by 32-amp circuit breaker type C.

## Frost Tech Standard White Upright Glass Door Freezer

Our Upright Display Freezer – Standard White Glass Door is a great value display freezer with an easy clean interior, with LED lighting and digital controller, providing the perfect environment to display your frozen foods. This cabinet is ideal for outlets where full height storage is a necessity.



### Features

- White steel exterior.
- Aluminium interior for long life
- Fitted rollers for easy manoeuvring
- 6 Fixed heavy duty shelves
- 4 Adjustable feet for leveling
- Digital temperature control display
- Manual defrost
- CFC-Free insulation
- High-performance long life fan motor
- Low energy compressors
- Replaceable door gasket, for maintenance
- Suitable for use in high ambient
- Stainless Steel drip tray, no rust

**ECO-UGF60 Freezer White Steel**

### Technical Specifications

CODE	DIMENSIONS mm WxDxH	TEMP RANGE	SHELVES	WEIGHT KG
ECO-UGF60	600x680x1960	-18 / -24°C	6	120kg

13A plugs which must be inserted into separate 13A sockets connected to a minimum 32A mains supply. The socket employed must be properly earthed, firmly installed and protected by 32-amp circuit breaker type C.

# Frost Tech Large Double Hinged Glass Door Upright Display Freezer

The Upright Display Freezer – Large Double Hinged Glass Door is a high-spec, high-capacity double hinged glass door freezer with LED side lights. Our upright display freezer will offer you a great visibility of your merchandised products.



## Features

- Aluminium interior for long life
- 2 Vertical energy saving LED strip lights
- Self-close triple glazed energy saving door
- 5 Adjustable heavy duty shelves
- 4 Castors for ease of cleaning
- 2 Front feet for leveling
- Digital temperature control display
- Auto defrost
- CFC-Free insulation
- High-performance long-life fan motor
- Low energy compressors
- Replaceable door gasket, for maintenance
- Suitable for use in high ambient
- Stainless Steel drip tray, no rust

**UHGF120 Freezer White Steel**

## Technical Specifications

CODE	DIMENSIONS mm WxDxH	TEMP RANGE	SHELVES	WEIGHT KG
UHGF120	1200x660x1970	-18 / -24°C	5	208kg

13A plugs which must be inserted into separate 13A sockets connected to a minimum 32A mains supply. The socket employed must be properly earthed, firmly installed and protected by 32-amp circuit breaker type C.



## Chest Freezer Sliding Glass Lid

The Frost-Tech Chest Display Freezer Sliding Glass Lid (1510mm) ensures your products are displayed clearly and kept at a perfect temperature for long storage. This chest freezer is ideal for showcasing goods such as boxed or bagged frozen foods like pizzas, ready meals and vegetables also great for ice creams, lollies and much more. This commercial freezer is perfect for cafes, convenience stores, forecourts and similar catering companies.



**GLF150 Freezer White Steel**

### Features

- White steel exterior.
- Lockable
- 2 energy saving
- LED strip lights
- Curved sliding glass lids
- 5 Baskets
- 4 Castors for ease of cleaning
- CFC-Free insulation
- Adjustable thermostat
- ECO Friendly

### Technical Specifications

CODE	DIMENSIONS mm WxDxH	TEMP RANGE	BASKETS	WEIGHT KG
GLF150	1510x700x850	-18 / -24°C	5	85kg

13A plugs which must be inserted into separate 13A sockets connected to a minimum 32A mains supply. The socket employed must be properly earthed, firmly installed and protected by 32-amp circuit breaker type C.

# Gastronorm Storage Fridge & Freezers



Upright Gastronorm Chillers are simply perfect for storing meat and fish at optimum chilled conditions and all within a Stainless steel elegant frame.

## Large Stainless Steel Upright Single Door Gastronorm Chiller

The Stainless steel single door upright chiller became ideal for absolutely any catering environment with a large volume capacity. So, you can be ensured you will be purchasing a very reliable and cost effective commercial fridge. In addition, this Upright Chillers represent the perfect solution for storing meat at optimum chilled conditions and all within a Stainless steel elegant frame. Above all, ECO-Fridge storage fridges are made to the highest standards, perfect for your kitchen at the lowest prices, just for you. In conclusion, ECO-Fridge meat fridge cabinets are perfect for any kitchen. Consequently, we provide the Upright chiller category, to ensure you the best quality. (Designed to Operate to 43°C Ambient) (Suitable for Meat)

### Features

- *Stainless Steel exterior*
- *Removable door gasket*
- *Digital temp display*
- *Fitted castors*
- *Insulation 75mm thick in water based polyurethane foam with denseness approximately 42 kg/m<sup>3</sup>*
- *Magnetic door gasket with counter magnet on ledges*
- *Door in 18/10 stainless steel*
- *Full height door handle*
- *Ladder rack in 18/10 stainless steel, easily removed for easy cleaning*
- *Forced air refrigeration system which promises the total efficiency and uniformity within the unit*
- *Energy savings auto defrost cycle*
- *Defrost water evaporation system with superheated gas for appliances with remote cooling unit*
- *Defrost water evaporation by means of hot gas pipe*
- *Controller equipped with cabinet probe, evaporator probe and condenser probe*
- *Protected compressor with overheat cut out & automatic reset*
- *Evaporator fan shuts off automatically when opening door*
- *Temperature controller with alarm signalling*



ECO-GN700-M Chiller Stainless Steel

### Technical Specifications

CODE	DIMENSIONS mm WxDxH	TEMP RANGE	SHELVES	WEIGHT KG
ECO-GN700M	740x900x2000	-5 / +5°C	4	140kg

13A plugs which must be inserted into separate 13A sockets connected to a minimum 32A mains supply. The socket employed must be properly earthed, firmly installed and protected by 32-amp circuit breaker type C.

# Large Stainless Steel Upright Single Door Fish/Meat Gastronorm Chiller

The Stainless steel single door upright Fish cabinet are ideal for any catering environment with a large volume capacity, optimised fish storage conditions with a no fan cooling system designed to prevent the fish from drying out. So, you can be ensured you will be purchasing a very reliable and cost effective commercial fridge. This Upright Chiller represent the perfect solution for storing your raw Meat and Fish at optimum conditions and all within a Stainless steel elegant frame. Above all, ECO-Fridge storage fridges are made to the highest standards, perfect for your kitchen at the lowest prices, just for you. In conclusion, ECO-Fridge meat and fish fridge cabinets are perfect for any kitchen. (Designed to Operate in high Ambient temperatures) (Suitable for Meat and Fish)



**ECO-GN700FISH Chiller Stainless Steel**

## Features

- Stainless Steel exterior
- Removable door gasket
- Digital temp display
- Fitted castors
- Insulation 75mm thick in water based polyurethane foam with denseness approximately 42 kg/m3
- Magnetic door gasket with counter magnet on ledges
- Door in 18/10 stainless steel
- Full height door handle
- Ladder rack in 18/10 stainless steel, easily removed for easy cleaning
- Manual defrost
- Defrost water evaporation by means of hot gas pipe
- Controller equipped with cabinet probe, evaporator probe and condenser probe
- Protected compressor with overheat cut out & automatic reset
- Temperature controller with alarm signalling

## Technical Specifications

CODE	DIMENSIONS mm WxDxH	TEMP RANGE	SHELVES	WEIGHT KG
ECO-GN700-FISH	740x900x2000	-5 / +5°C	4	140kg

13A plugs which must be inserted into separate 13A sockets connected to a minimum 32A mains supply. The socket employed must be properly earthed, firmly installed and protected by 32-amp circuit breaker type C.

# Large Stainless Steel Upright Double Door Gastronorm Chiller

The Upright Double Door Chiller Frost-Tech Standard Stainless Steel is a stylish catering unit, ideal for absolutely any food environment with a large volume capacity. So, you can be ensured you will be purchasing a very reliable and cost effective storage fridge. (Designed to Operate to 43°C Ambient) (Suitable for Meat)



## Features

- Stainless Steel exterior
- Removable door gasket
- Fitted castors
- Gastronorm friendly
- Insulation 75mm thick in water based polyurethane foam with denseness approximately 42 kg/m<sup>3</sup>
- Magnetic door gasket with counter magnet on ledges
- Door in 18/10 stainless steel
- Full height door handle
- Ladder rack in 18/10 stainless steel, easily removed for easy cleaning
- Forced air refrigeration system which promises the total efficiency and uniformity within the unit
- Energy savings auto defrost cycle
- Defrost water evaporation system with superheated gas for appliances with remote cooling unit
- Defrost water evaporation by means of thermostatic heater
- Digital controller equipped with cabinet probe, evaporator probe and condenser probe
- Protected compressor with overheat cut out & automatic reset
- Evaporator fan shuts off automatically when opening door
- Temperature controller with alarm signalling

## Technical Specifications

CODE	DIMENSIONS mm WxDxH	TEMP RANGE	SHELVES	WEIGHT KG
ECO-GN1440M	1440x900x2000	-5 / +5°C	8	195kg

13A plugs which must be inserted into separate 13A sockets connected to a minimum 32A mains supply. The socket employed must be properly earthed, firmly installed and protected by 32-amp circuit breaker type C.

# Large Stainless Steel Upright Single Door Gastronorm Freezer

The Gastronorm Freezer Frost-Tech standard Stainless Steel Single Door is a stylish catering unit, ideal for absolutely any catering environment with a large volume capacity. Therefore, you can be ensured you will be purchasing a very reliable and cost effective commercial freezer. (Designed to Operate to 43°C Ambient)



**ECO-GN700L Freezer Stainless Steel**

## Features

- *Stainless Steel exterior Removable door gasket*
- *Digital temp display*
- *Fitted castors Insulation 75mm thick in water based polyurethane foam with denseness approximately 42 kg/m3*
- *Magnetic door gasket with counter magnet on ledges*
- *Door in 18/10 stainless steel*
- *Full height door handle*
- *Ladder rack in 18/10 stainless steel, easily removed for easy cleaning*
- *Forced air refrigeration system which promises the total efficiency and uniformity within the unit*
- *Energy savings auto defrost cycle*
- *Defrost water evaporation system with superheated gas for appliances with remote cooling unit*
- *Defrost water evaporation by means of hot gas pipe*
- *Controller equipped with cabinet probe, evaporator probe and condenser probe*
- *Protected compressor with overheat cut out & automatic reset*
- *Evaporator fan shuts off automatically when opening door*
- *Temperature controller with alarm signalling*

## Technical Specifications

CODE	DIMENSIONS mm WxDxH	TEMP RANGE	SHELVES	WEIGHT KG
ECO-GN700L	740x900x2000	-18 / -24°C	4	140kg

13A plugs which must be inserted into separate 13A sockets connected to a minimum 32A mains supply. The socket employed must be properly earthed, firmly installed and protected by 32-amp circuit breaker type C.

# Large Stainless Steel Upright Double Door Gastronorm Freezer

The Gastronorm Freezer Frost-Tech standard Stainless Steel Double Door is a stylish commercial freezer, ideal for absolutely any catering environment with a large volume capacity, you can be ensured you will be purchasing a very reliable and cost effective meat freezer. (Designed to Operate to 43°C Ambient)



## Features

- Stainless Steel exterior
- Removable door gasket
- Fitted castors
- Gastronorm friendly
- Insulation 75mm thick in water based polyurethane foam with denseness approximately 42 kg/m<sup>3</sup>
- Magnetic door gasket with counter magnet on ledges
- Door in 18/10 stainless steel
- Full height door handle
- Ladder rack in 18/10 stainless steel, easily removed for easy cleaning
- Forced air refrigeration system which promises the total efficiency and uniformity within the unit
- Energy savings auto defrost cycle
- Defrost water evaporation system with superheated gas for appliances with remote cooling unit
- Defrost water evaporation by means of thermostatic heater
- Digital controller equipped with cabinet probe, evaporator probe and condenser probe
- Protected compressor with overheat cut out & automatic reset
- Evaporator fan shuts off automatically when opening door
- Temperature controller with alarm signalling

## Technical Specifications

CODE	DIMENSIONS mm WxDxH	TEMP RANGE	SHELVES	WEIGHT KG
ECO-GN1440L	1440x900x2000	-18 / -24°C	8	200kg

13A plugs which must be inserted into separate 13A sockets connected to a minimum 32A mains supply. The socket employed must be properly earthed, firmly installed and protected by 32-amp circuit breaker type C.

# Stainless Steel Two Door Counter Fridge

The Frost-Tech Stainless Steel Eco Two Door Counter Chiller (meat) cabinet is one of our top of the range stainless steel commercial fridges, ideal for absolutely any catering environment with a large volume capacity, as well as working excellent under the very hot temperature of a busy kitchen, you can be ensured you will be purchasing a very reliable chiller. (Designed to Operate to 43°C Ambient) (Suitable for Meat)



**EP12M Chiller Stainless Steel**

## Features

- 304 grade Stainless Steel interior / exterior
- Removable door gasket
- Digital temp display
- Fitted castors
- Gastronorm friendly Insulation 75mm thick in water based polyurethan foam with denseness approximately 42 kg/m<sup>3</sup>
- Magnetic door gasket on sides with counter magnet on gasket ledges
- Door in AISI 304 18/10 stainless steel
- Integrated door handle
- Lader rack in AISI 304 18/10 stainless steel, easily removed for easy cleaning
- Top monoblock system enabling use of whole refrigerated area
- Monoblock unit removable for easy servicing and replacement
- Cooler and freezer R404a refrigerant
- Forced air refrigeration system which promises the total efficiency and uniformity within the unit
- Energy savings auto defrost cycle
- Defrost water evaporation system with superheated gas for appliances with remote cooling unit
- Defrost water evaporation by means of thermostatic resistor
- Able to adjust the humidity inside the cabinet from a minimum to a maximum
- Controller equipped with cabinet probe, evaporator probe and condenser probe
- Protected compressor with overheat cut out & automatic reset
- Evaporator fan shuts off automatically when opening door
- Temperature controller with alarm signalling

## Technical Specifications

CODE	DIMENSIONS mm WxDxH	TEMP RANGE	DOORS	WEIGHT KG
EP12M	1480x700x850	-5 / +5°C	2	200kg

13A plugs which must be inserted into separate 13A sockets connected to a minimum 32A mains supply. The socket employed must be properly earthed, firmly installed and protected by 32-amp circuit breaker type C.

# Stainless Steel Two Door Counter Freezer

The Frost-Tech Eco Premium Two Door Counter Freezer is one of our top of the range stainless steel catering units. Moreover, it becomes ideal for absolutely any catering environment with a large volume capacity. It also can work excellent under the very hot temperature of a busy kitchen. So you can be ensured you will be purchasing a very reliable commercial freezer. (Designed to Operate to 43°C Ambient)



**EP12L Freezer Stainless Steel**

### Features

- 304 grade Stainless Steel interior / exterior
- Removable door gasket
- Digital temp display
- Fitted castors
- Gastronorm friendly Insulation 75mm thick in water based polyurethan foam with denseness approximately 42 kg/m<sup>3</sup>
- Magnetic door gasket on sides with counter magnet on gasket ledges
- Door in AISI 304 18/10 stainless steel
- Integrated door handle
- Lader rack in AISI 304 18/10 stainless steel, easily removed for easy cleaning
- Top monoblock system enabling use of whole refrigerated area
- Monoblock unit removable for easy servicing and replacement
- Cooler and freezer R404a refrigerant
- Forced air refrigeration system which promises the total efficiency and uniformity within the unit
- Energy savings auto defrost cycle
- Defrost water evaporation system with superheated gas for appliances with remote cooling unit
- Defrost water evaporation by means of thermostatic resistor
- Able to adjust the humidity inside the cabinet from a minimum to a maximum
- Controller equipped with cabinet probe, evaporator probe and condenser probe
- Protected compressor with overheat cut out & automatic reset
- Evaporator fan shuts off automatically when opening door
- Temperature controller with alarm signalling

### Technical Specifications

CODE	DIMENSIONS mm WxDxH	TEMP RANGE	DOORS	WEIGHT KG
EP12L	1480x700x850	-18 / -24°C	2	200kg

13A plugs which must be inserted into separate 13A sockets connected to a minimum 32A mains supply. The socket employed must be properly earthed, firmly installed and protected by 32-amp circuit breaker type C.



# Upright Chiller & Freezer Storage Cabinets



Upright Storage Chillers are the ideal way to optimise space offering maximum storage capacity in a small footprint.

## White Single Door Upright Storage Chiller

This White Single Door Upright Chiller is ideal for outlets where full height storage is a necessity. These white steel units are of true commercial construction offering long lasting durability.



### Features

- Aluminium interior for long life
- 4 Adjustable heavy duty shelves
- 4 Adjustable feet for leveling
- Digital temperature control display
- Auto/Manual defrost
- CFC-Free insulation
- High-performance long life fan motor
- Low energy compressors
- Replaceable door gasket, for maintenance
- Stainless Steel drip tray, no rust

ECO-USC60    Chiller    White Steel

### Technical Specifications

CODE	DIMENSIONS mm WxDxH	TEMP RANGE	SHELVES	WEIGHT KG
ECO-USC60	600x700x1860	+2 / +7°C	4	117kg

13A plugs which must be inserted into separate 13A sockets connected to a minimum 32A mains supply. The socket employed must be properly earthed, firmly installed and protected by 32-amp circuit breaker type C.

# White Single Door Upright Storage Freezer

This Standard White Upright Storage Freezer with its solid door is the ideal commercial freezer for outlets where full height storage is a necessity.



## Features

- Aluminium interior for long life
- 6 Static heavy duty shelves
- 4 Adjustable feet for leveling
- Digital temperature control display
- Manual defrost
- CFC-Free insulation
- High-performance long life fan motor
- Low energy compressors
- Replaceable door gasket, for maintenance
- Suitable for use in high ambient
- Stainless Steel drip tray, no rust

**ECO-UFC60**   **Freezer**   **White Steel**

## Technical Specifications

CODE	DIMENSIONS mm WxDxH	TEMP RANGE	SHELVES	WEIGHT KG
ECO-UFC60	600x700x1860	-18 / -24°C	6 Static	117kg

13A plugs which must be inserted into separate 13A sockets connected to a minimum 32A mains supply. The socket employed must be properly earthed, firmly installed and protected by 32-amp circuit breaker type C.

# Under Counter Storage Chiller & Freezer



Stainless Steel Under Counter Fridge is a heavy-duty single door cabinet, ideal for the busiest of outlets where storage is a necessity.

## Stainless Steel Under Counter Storage Chiller

This Stainless Steel Under Counter Chiller high quality, heavy-duty cabinet is ideal for the busiest of outlets where storage is a necessity. They are of true commercial construction offering long lasting durability. S



**SUC61 Chiller Stainless Steel**

### Features

- Aluminium interior for long life
- 2 Adjustable heavy-duty shelves
- 4 Adjustable feet for leveling
- Digital temperature control display
- Auto defrost
- CFC-Free insulation
- High-performance long-life fan motor
- Low energy compressors
- Replaceable door gasket, for maintenance
- Suitable for use in high ambient
- Stainless Steel drip tray, no rust

### Technical Specifications

CODE	DIMENSIONS mm WxDxH	TEMP RANGE	SHELVES	WEIGHT KG
SUC61	600x600x900	0 / +5°C	1	55kg

13A plugs which must be inserted into separate 13A sockets connected to a minimum 32A mains supply. The socket employed must be properly earthed, firmly installed and protected by 32-amp circuit breaker type C.

## Stainless Steel Under Counter Storage Freezer

This Stainless Steel Under Counter Freezer, high quality, heavy-duty cabinet is ideal for the busiest of outlets where storage is a necessity. The commercial freezer is of true commercial construction offering long lasting durability.



**SUF60 Freezer Stainless Steel**

### Features

- Aluminium interior for long life
- 2 Adjustable heavy-duty shelves
- 4 Adjustable feet for leveling
- Digital temperature control display
- Auto defrost
- CFC-Free insulation
- High-performance long-life fan motor
- Low energy compressors
- Replaceable door gasket, for maintenance
- Suitable for use in high ambient
- Stainless Steel drip tray, no rust

### Technical Specifications

CODE	DIMENSIONS mm WxDxH	TEMP RANGE	SHELVES	WEIGHT KG
SUF60	600x600x900	-18 / -24°C	1	55kg

13A plugs which must be inserted into separate 13A sockets connected to a minimum 32A mains supply. The socket employed must be properly earthed, firmly installed and protected by 32-amp circuit breaker type C.

# Frost-Tech Terms & Conditions

1. **ORDERS:** Buyer and Supplier, no orders submitted by the Buyer shall be deemed to be accepted by the Seller unless and until payment is received in full. The Buyer responsibility to ensure that the equipment will be fit for the purpose for which the Buyer intend to use the equipment. By submitting an order the customer agrees to apply the terms and condition of this agreement in priority over any other agreement. This agreement is the only form of contract between the parties and any customer terms and condition will not apply. Every sale is considered a business to business contract, So a personal purchase will not be covered under the consumer rights act. 2. **PRICE:** the Company reserves the right to amend prices at any time consequent upon increased costs of raw materials, labour, transport, market conditions or for any other reason whatsoever. 3. **WEEE Directive.** The Buyer will take responsibility for the finance of future collection and disposal of the cabinet, in accordance with the regulations. If the producer retains that responsibility then an extra charge will be incurred. The cost will be negotiated and invoiced separately. 4. **DELIVERY/COLLECTION:** dates are given as estimates only and the Company cannot accept liability for any delays howsoever caused. All cabinets are delivered to the front door of ground floor locations only. The delivery person/driver may at his discretion assist with delivering the cabinets to a location within the premises nominated by the customer, at the customer's sole risk. 5. **INSTALLATION:** it is the Buyer's responsibility to ensure that the equipment is installed and commissioned by a qualified refrigeration engineer and all costs will be borne by the Buyer. Do not install where maximum room temperature is more than 25°C and humidity over 60%. Install as described in here and the manufacturer manual. The refrigerated cabinet air temperature -1°C to +7°C. Freezer -18°C to -22°C. 6. **TERMS OF PAYMENT:** unless otherwise agreed by the Company in writing, payment for goods is strictly on a pro forma basis and the goods will not be reserved until payment is received. 7. **TITLE TO GOODS:** The risk in the goods shall however pass to the Buyer at the time of delivery. 8. **CHECKING GOODS/CLAIMS FOR DAMAGE IN TRANSIT:** it is the Buyer's responsibility to inspect the goods at the time of taking delivery/collection. Should equipment arrive damaged/missing parts, the delivery/part delivery must be refused. If signed for "unexamined/examined" the Buyer/Person shall be deemed to have accepted the goods and no claim for damage/missing parts will be entertained by the Seller. Refrigerators noise level 68dBA one metre from cabinet. 9. **CANCELLATION/RETURN OF GOODS:** requests for return of goods for whatever reason will not be entertained by the Seller, and will be entirely at the discretion of the Company. Defects in quality or dimension of any delivery shall not be grounds for cancellation of the remainder of the contract. 10. **WARRANTY:** All goods are sold without Warranty. Different warranty requirements may be negotiated on a market and country basis. We will terminate any Warranty/Guarantee if our staff are subjected to physical or verbal abuse in the course of carrying out their duties. It is the Buyer's legal responsibility to ensure that preventative maintenance is carried out and all electrical and mechanical parts tested every three months by a qualified refrigeration engineer as described in here and the manufacturer manual. Failure to provide satisfactory maintenance will invalidate any Warranty. All goods are sold with NO Warranty. Any Warranty will exclude any glass, light fittings, paintwork/rust, condensation, cosmetic damage or customer mis-use. The Seller shall be under no liability in respect of any defect arising from fair wear and tear: abnormal site conditions or failure to have the equipment serviced as described in here and the manufacturer manual. The Company shall not accept any claim for any loss of profit or economic loss resulting from defective parts. All parts must be paid for in full prior to despatch. Labour and transport costs for replacing faulty parts will be charged at the current rate. Following replacement of a part, the Company cannot guarantee that other parts will not fail in the future. The refrigerated cabinets must be maintained by a qualified refrigeration engineer every three months as described above and the manufacturer manual. Install where maximum room temperature is not over 25°C, and Relative humidity not over 60%. 11. **VARIANCE:** All dimensions given are to be regarded as being for guidance only and are not binding on the Company. It is the responsibility of the Buyer to allow sufficient clearance for installation: and to ensure that the ventilation grill panels are kept free for adequate air circulation.: also to ensure that cabinets are positioned away from direct sunlight or source of hot or cold air. Cabinet noise level 68dBA 12. **MODIFICATIONS:** if any alterations have been undertaken by the buyer or a contractor the Company shall not be held responsible for any defects or problems which may occur: any such alterations will invalidate the warranty on the equipment. All costs incurred by the Supplier to diagnose problems arising from such modifications will be borne by the Buyer.

## **ECO-FRIDGE CUSTOMER CARE**

**ECO-Fridge UK Ltd**  
2 Wedgwood Road,  
Bicester, Oxfordshire,  
OX26 4UL  
United Kingdom

*Tel: 01869 249965*

*Fax: 01869 322477*

*E-mail: [sales@eco-fridge.co.uk](mailto:sales@eco-fridge.co.uk)*